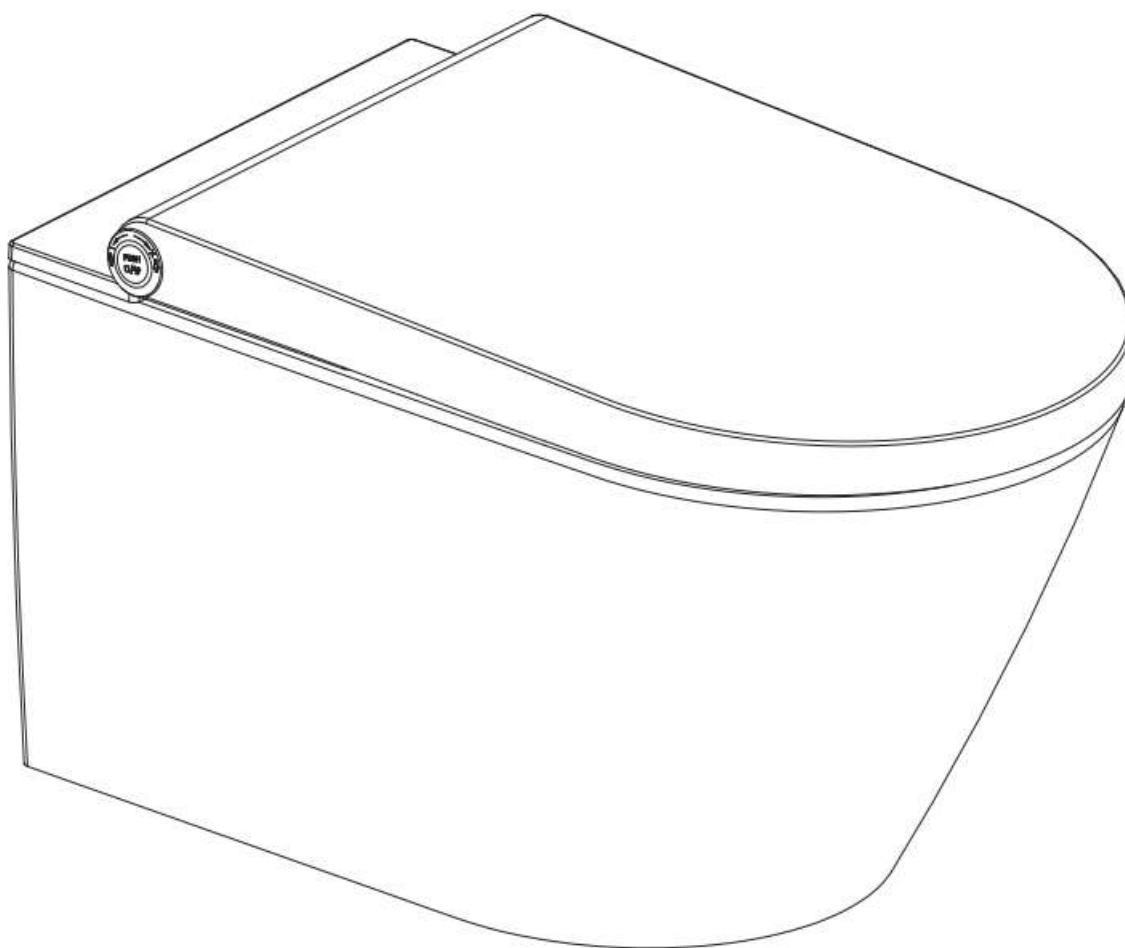


User Manual – Wall-Hung Toilet Bowl Cronus Premium



cerano

Safety Precautions

Explanation of Symbols



Danger – Indicates a potentially hazardous situation that may cause serious injury or death.



Notice – Indicates important information that is not related to personal injury but may affect the proper use or functioning of the product.



Forbid – Indicates activities that are forbidden.



MUST BE ABIDED

Must be abided – Indicates activities that must be abided by the rules.



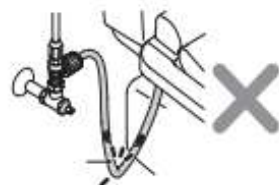
Supplier is not responsible for any damages resulting from failure to comply with the following regulations.

1. This device is a Class I electrical appliance and must be properly connected to the grounding system.
 2. If the power cable is damaged, it must be replaced by the manufacturer, its service representative, or another qualified person to avoid danger.
 3. This device is an electrical appliance. It must not be installed in places where it may be exposed to splashing water or high temperatures. Proper ventilation must be ensured in the bathroom using a fan or ventilation opening.
 4. This device may be used by children under 3 years old only under the constant supervision of an adult in their immediate vicinity. Children aged 3 and above and persons with reduced physical, sensory, or mental capabilities or lack of experience and knowledge may use the device if they have been properly instructed and supervised. Children must not play with the device. Cleaning and maintenance must not be performed by children without supervision.
 5. The device is permanently connected to the water supply pipe. Please do not disassemble the water connection except during installation and maintenance.
 6. Portable Residual Current Devices (PRCD) are optional. The PRCD must be securely fixed.
-



FORBID

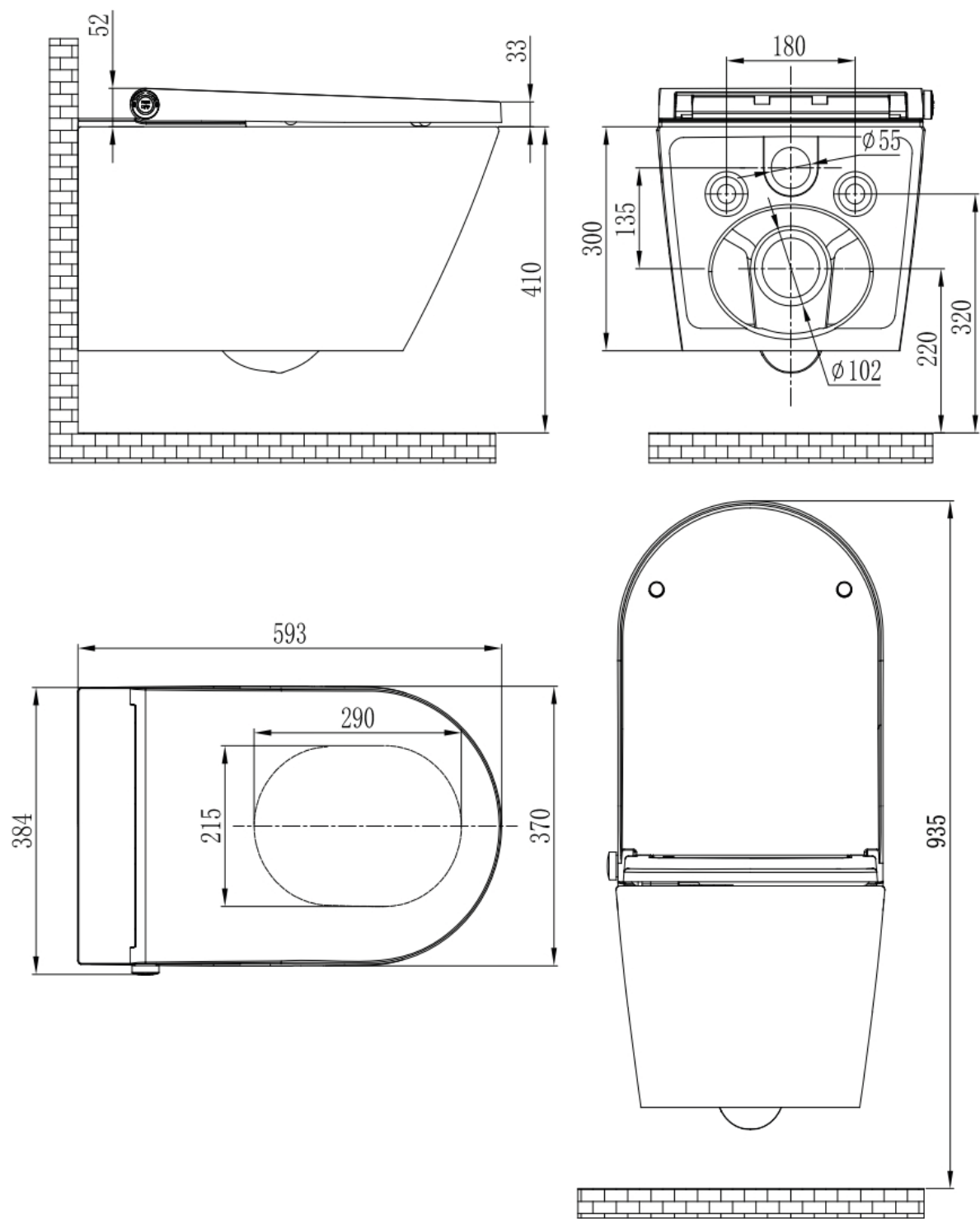
1. Do not insert or unplug the power plug with wet hands. Otherwise, there is a risk of electric shock.
2. Do not damage the power cable or plug. Otherwise, there is a risk of electric shock, short circuit, and fire.
3. Do not use a loose socket. Otherwise, there is a risk of electric shock and fire.
4. The power supply must comply with regulations. Otherwise, there is a risk of product damage and fire.
5. Do not disassemble, repair, or reassemble the product. Otherwise, there is a risk of electric shock and fire.
6. Do not expose the device to open flames or cigarettes – risk of fire.
7. Make sure that water, cleaning agents, or urine do not get on the product or plug. Otherwise, there is a risk of electric shock, product damage, and fire.
8. Do not turn the product upside down. It may cause damage.
9. Do not bend or deform the supply hose. It could cause water leakage.
10. Use only new hoses supplied with the device. Do not reuse old hoses.



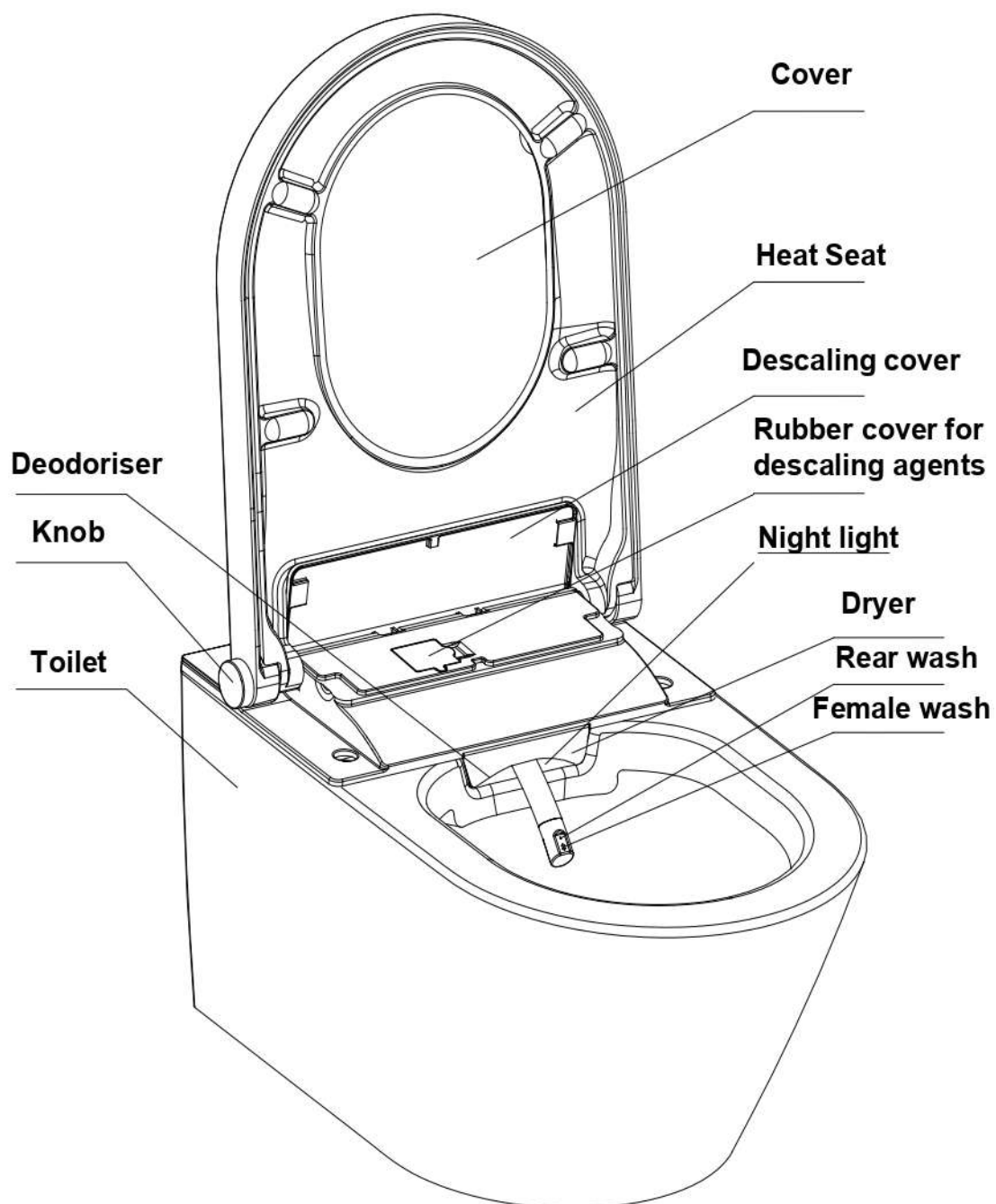
Technical Specifications

Model		Cronus Premium
Wash	Rear wash	●
	Female wash	●
	Massage	●
	Adjustable water temperatur	OFF/5 steps (default 3rd)
	Adjustable flow rate	5 steps (default 3rd)
	Adjustable spray position	5 steps (default 5th)
Warm air	Air drying	●
	Adjustable air rate	5 steps (default 3rd)
	Adjustable dryer temperatur	OFF/5 steps (default 3rd)
Heated seat	Heated seat	●
	Adjustable seat temperatur	●
Hygiene	Deodoriser	●
	Nozzle automatic cleaning	●
	Nozzle manual cleaning	●
	Descaling	●
	User mode	2 users
	Remote control	D81-01
	Night light	●
	Breathing lamp	●
	Soft closing seat and cover	-
	Body knob	●
	Rimless toilet	●
	Installation of the toilet	Wall-hung
	Water supply connector	G 3/8
	Rated voltage	AC220-240 V, 50/60 HZ
	Power	1170 W
	Length of power cord	1.8 m
	Water supply pressure	0.07-0.75 MPa (0.7-7.5Bar)
	Water supply temperature	4-35°C
	Ambient temperature	4-40°C
	Protection degree	IPX4
Wash device	Flow rate	350-650 mL/min
	Water temperature	31-39 °C
	Wash cycle time	3 minutes
	Heating mode	Tank
	Heater power	120W
	Safety device	Thermal cutoff fuses/Liquid level switch/Thermostat
	Backflow prevention	Air gab of AB type
Dry device	Speed of air	≥ 4m/S
	Dryer power	350 W
	Dry cycle time	3 Minutes
	Warm air temperature	35-50°C
	Safety device	Thermal cutoff fuses/Thermostat
Deodorization	Deodorization mode	Diatom
	Deodorization cycle time	15 minutes
Heated seat	Heated power	50W
	Seat temperature	29-37°C
	Safety device	Thermal cutoff fuses/Thermostat
Remote control	Frequency range	2460 MHz
	Maximum RF output power	-10 dBm
	Type of batteries	1.5V LR03 AAA
	Number of batteries	Two pieces
	Other safety device	Residual current device
	Net weight	35 kg
	Dimension	593*384*388 mm

Technical upgrade will be edited into the new version instruction without additional notice.
Please follow the real if it is different from the nominal in shape, color and accessories.

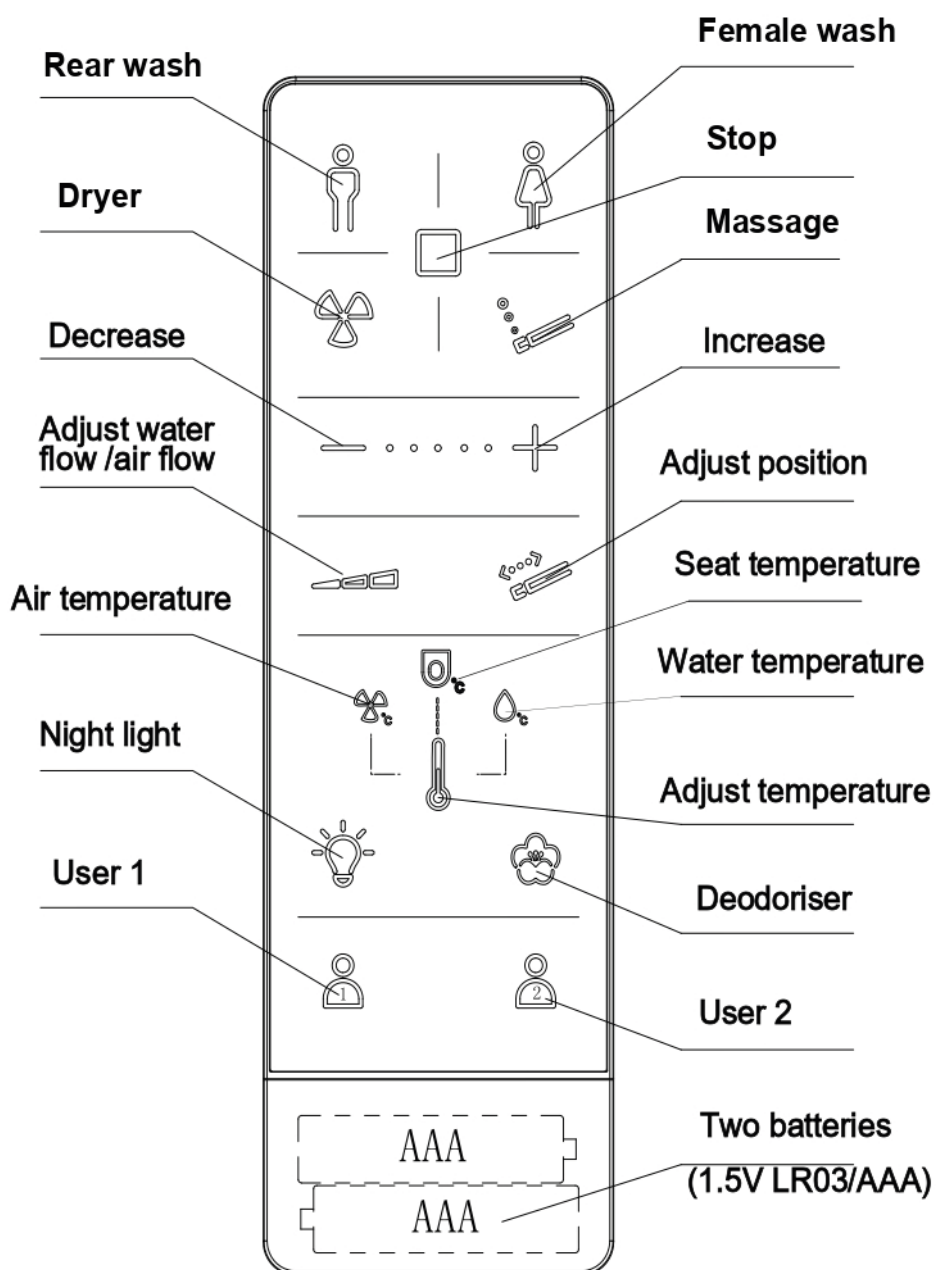


Overview



The pictures of this instruction is for reference only. Please subject to the actual product.

Remote control

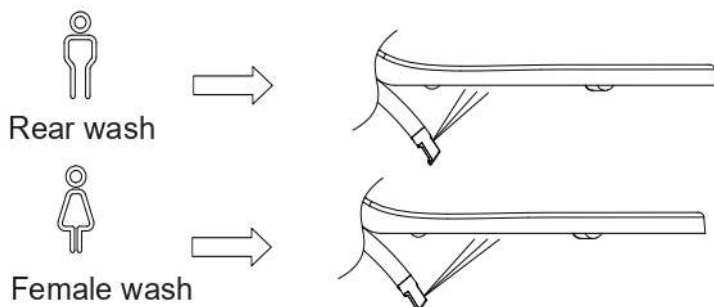


1. Before using, the remoter requires 2 batteries (type 1,5 V LR3/AA).
2. The followed remote-control operation is only for the model with the remote control.
3. Versions of software: V1.0
(The software updates will not be notified. Please follow the real remote control.)

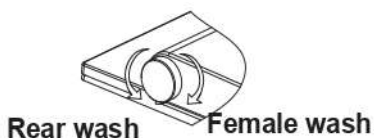
Rear wash / Female wash

Be seated

Press the „wash“ button on the remote control then it start to wash. It will stop after 3 minutes. You can stop washing before this by pressing the „stop“ button.



Or you can operate by rotating the knob. Rotate the knob in the clockwise direction to active „female wash“ and the anticlockwise direction for „Rear wash“. It will stop after 3 minutes and start to dry. You can stop washing before this by pressing the „stop“ button.

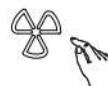


Note: While rear wash or female wash, it will wash at the fixed position for about 10 seconds, and movable wash for about 18 seconds, then regain to the fixed position until to the end.

Dry operation

Be seated

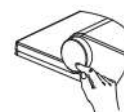
Press the „dry“ button on the remote control then it start to dry. It will stop after 3 minutes.



Or

Be seated

It is not in the process of rear or female washing. Press the knob then it start to dry. It will stop drying after 3 minutes.



NOTICE

All the operation is just for the model with all features. If the model what you bought has no the feature, please ignore the corresponding operation.

Massage operation

In the process of rear or female washing

Repeatedly press the „massage“ button on the remoter until to choose your desired spray mode



- Oscillating:** when one indicator light is on ◦
- Pulsating:** when two indicator lights are on ◦ ◦
- Oscillating + pulsating:** when three indicator lights are on ◦ ◦ ◦

Stop operation

In the process of rear washing, female washing or drying. Press the „stop“ button on the remote control it will stop washing or drying.



Or press the knob it will stop washing or drying.



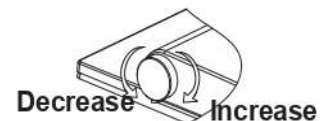
Adjust water flow rate

In the process of rear or female washing.

Press the „adjust flow“ button on the remote control, then press the „decrease“ or „increase“ button to adjust the flow rate.



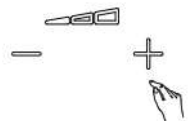
Or you can operate by rotating the knob. The flow rate will increase in the clockwise direction and decrease in the anticlockwise direction.



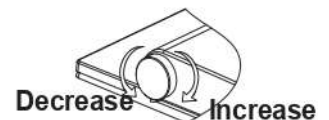
Adjust air flow rate

In the process of drying

Press the „Adjust flow“ button on the remote control, then press the „Decrease“ or „Increase“ button to adjust the air rate.



Or you can operate by rotating the knob. The flow rate will increase in the clockwise direction and decrease in the anticlockwise direction.

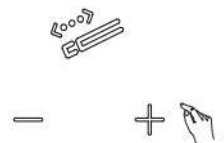


Adjust the nozzle position

Default 5 th

In process of rear or female washing

Press the „adjust position“ button on the remote control, then press the „Decrease“ or „Increase“ button to adjust the nozzle position forward or backward.

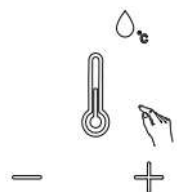


Adjust temperature

Adjust water temperature

In the process of rear or female washing

Repeatedly press the „adjust temperature“ button on the remote control until the water temperature icon is lighted, then press the „increase“ or „decrease“ button to adjust water temperature.



Or keep press the knob and rotate it. The water temperature will be increased in the clockwise direction and be decreased in the anticlockwise direction.



Adjust air temperature

In the process of drying

Repeatedly press the „adjust temperature“ button on the remote control until the air temperature icon is lighted, then press the „increase“ or „decrease“ button to adjust air temperature.

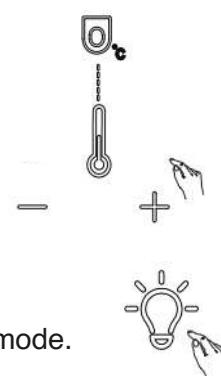


Or keep press the knob and rotate it. The air temperature will be increased in the clockwise direction and be decreased in the anticlockwise direction.



Adjust seat temperature

Repeatedly press the „adjust temperature“ button on the remote control until the seat temperature icon is lighted, then press the „increased“ or „decrease“ button to adjust seat temperature.



Light setting

Always on mode for the night light by default

Repeatedly press the „night light“ button on the remote control to choose the different mode.

Close mode: when one indicator light is on



Always on mode: when two indicator lights are on



Smart mode: when three indicator lights are on



Deodorize setting

Smart mode for the deodorization by default. It is on when the user sits down and it will be off after one minute when the user leaves. If there is no operation of washing or drying during being seated, it will be off after 15 minutes.

Repeatedly press the „deodorization“ button on the remote control to open or close the deodorization.



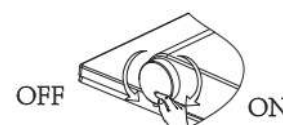
Close mode: when one indicator light is on



Smart mode: when two indicator lights are on



Or open the cover and be seated, without washing and drying, then always press the knob and rotate it



Breathing lamp setting

Always on by default

Open the cover and be seated, without washing and drying, then always press the knob for 6s. The breathing lamp will be lighted off. It will be lighted up again when pressing the knob for 6s.

User setting

Save the user setting

After adjusting the setting of water flow rate, temperature and nozzle position, keep pressing the „User 1“ or „User 2“ button on the remote control for more than 3 seconds to save the settings to „User 1“ or „User 2“



Retrieve the user setting

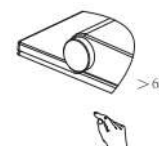
Before washing or drying press the „User 1“ or „User 2“ button on the remote control, then operate washing or drying. The flow rate, water temperature, nozzle position, and air temperature will be the same as saved.



Power standby setting

In the state without seating

Keep pressing the knob for more than 6 seconds, it will go into power standby mode. Press again the knob for more than 6 seconds to restart it.

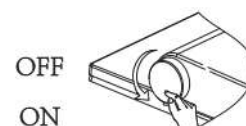


Sound setting

The sound is on by default. There is a beep when the bidet has received commands or signals.

Open the cover and seat.

Keep pressing the knob then rotate it. The sound will be on or off in the anticlockwise direction. Rotate it again in the anticlockwise direction the sound will be on



Or keep pressing the „adjust temperature“ button on the remote control, then press the „female wash“ button, press it again the sound will be on or off.



Off mode: when one indicator light is on ◦

On mode: when two indicator lights are on ◦ ◦

Care and cleaning

General care and cleaning recommendations

Maintaining interval	Maintaining activity
Daily	Remove water drops with a soft, lint-free cloth to avoid limescale stains
Weekly	Clean all surfaces and corners. Clean the spray nozzle if required. See „Nozzle cleaning“
Monthly	Clean the WC ceramic appliance with a low acidic cleaning agents
Every half year	Replace th filter if required
Every year	Descal the device. See „Descaling the device“

Cleaning agents and tools



Do not use the cleaning agents of strong acid and alkali to clean the E-bidet.
Do not use the hard brush .e.g. toilet brush nylon brush to clean the WC ceramic appliance.
Do not use the metal brush.

Self-cleaning the tank



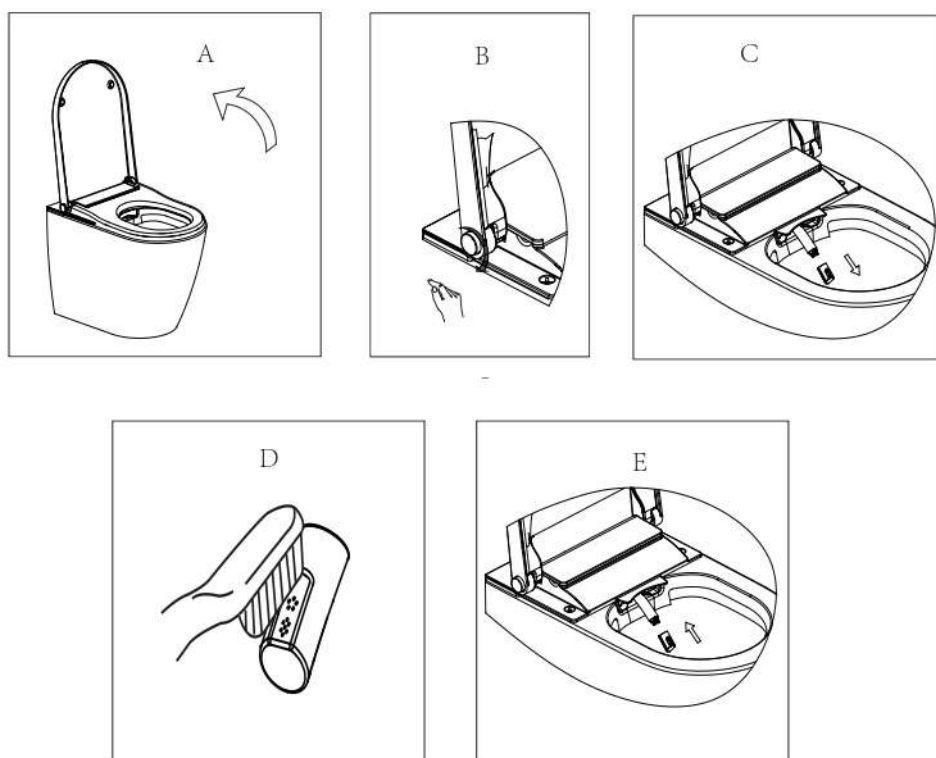
Not used for more than 72 hours, when the user operates the washing, it will open the self-cleaning for about 3 minutes. All the buttons are invalid during the self-cleaning and it will return to normal after the self-cleaning.

Nozzle cleaning

The nozzle will be cleaned before washing and after washing.

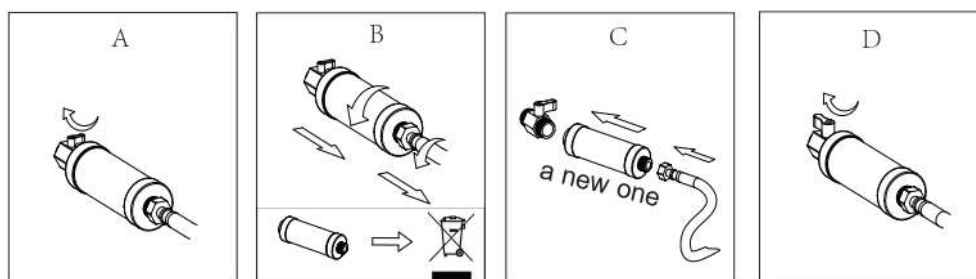
The operation of manual cleaning is as follows.

Open the cover and seat then rotate the knob in the clockwise direction. Then the nozzle will extend with cleaning water. It will return after 5 minutes or press the „stop“ button.



Replacing the filter

The filter has a service life of half a year. This is depended on the environment of water. The filter should be replaced when the wash flow is too small.



Descaling the device

You will need to descale the device at least once a year, or more often depending on the number of shower cycles and the water quality environment.

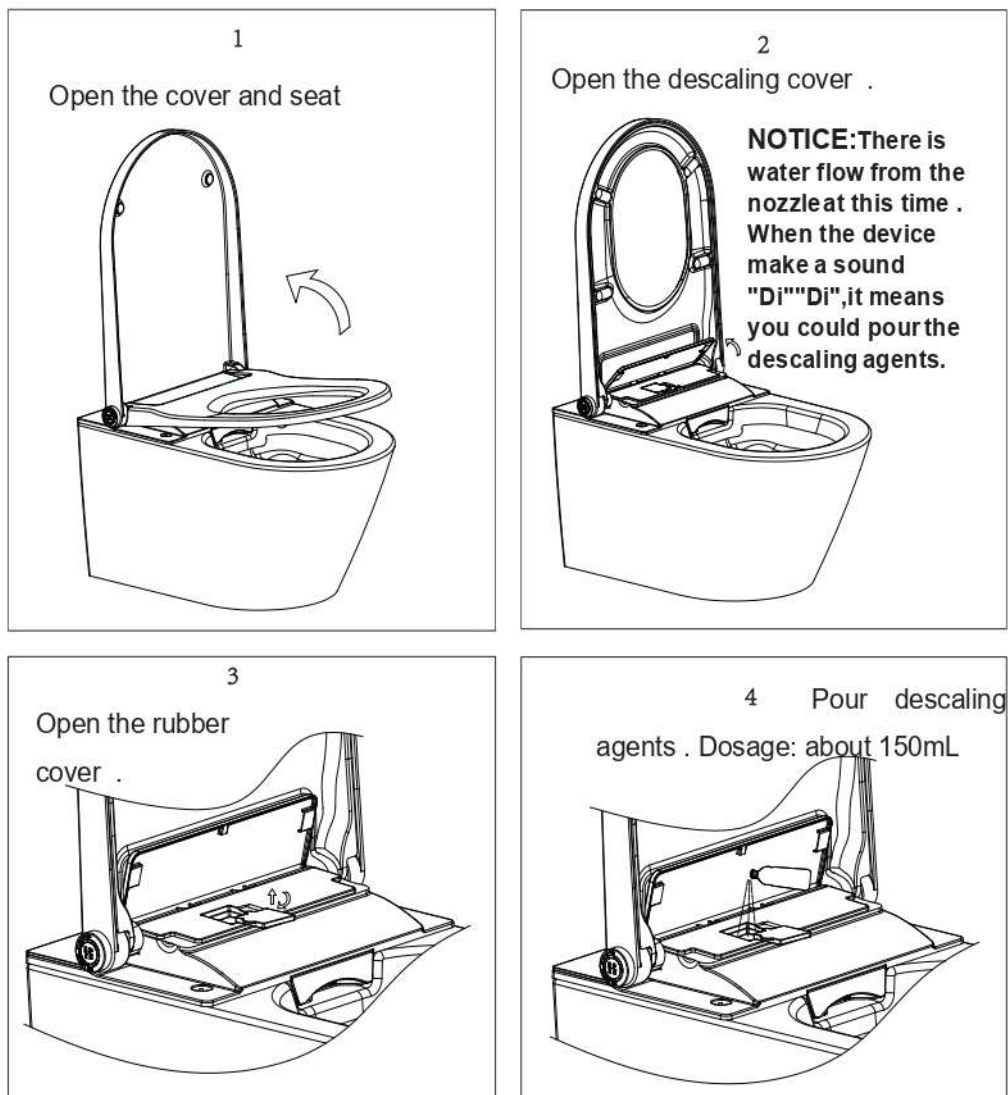
During the descaling procedure, you can continue to use the toilet without the shower functions.

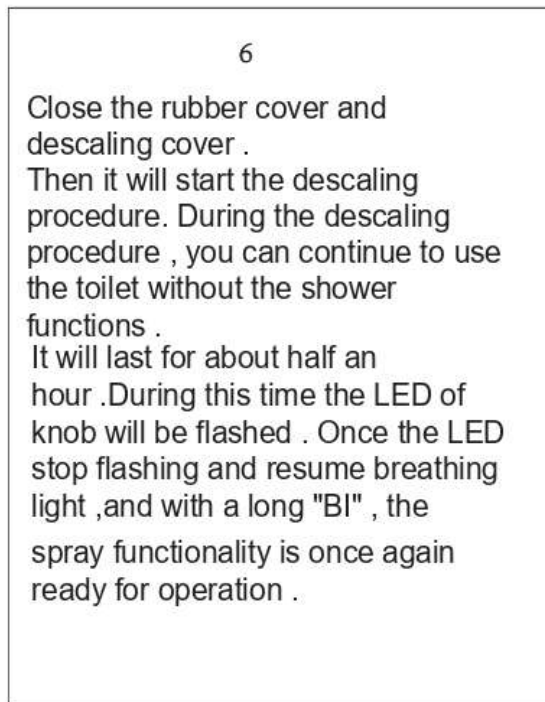
The descaling procedure lasts up to 30 minutes. During this time, the blue LED light always flash and the device makes a sound. Once the blue LED switches off, the spray functionality is once again ready for operation.

Please use the descaling agents of less foam.



NOTICE Damage to human body and the device from aggressive descaling agents.

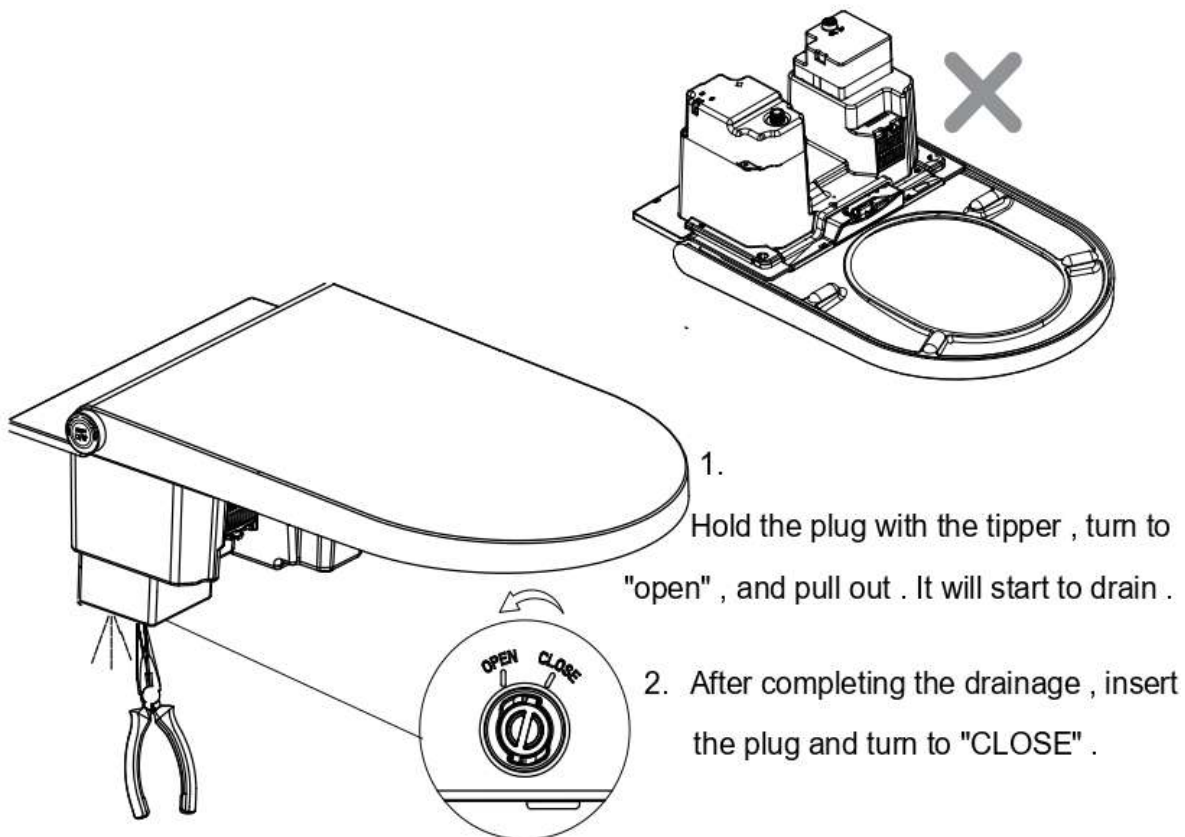




Drain the water tank



1. The water and power must be cut before you disassemble the E-Bidet
2. Do not invert or tilt it before you finish draining the water tank

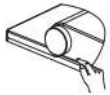


One-On-One setting

Keep pressing the „female wash“ button on the remote control for about 5s, the indicators light up in turn. hear a short beep, and the indicators begin flashing.



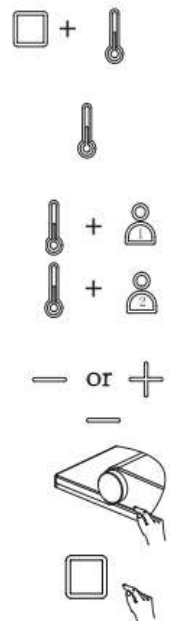
Press the „stop“ button on the bidet seat and release it, the indicators on the remote control stop flashing and stay on for 2s, the one-on-one matching is successfully.



Or

Install several electronic bidets in the same area, if you want each remote control to control the specified electronic bidet, please complete setting as per following steps.

1. Open both cover and seat and without seating. Set the night light to the „close“ model (just see the „light setting“).
2. Press the „stop“ button and „adjust temperature“ button on the remote control at the same time, and keep pressing for a few seconds, then hear the beep from the product and meanwhile the indicator lights of „-“ and „+“ buttons are on.
3. Release the „stop“ button, but keep pressing the „adjust temperature“ button
4. Press the „USER1“ and „USER2“ in order, and then release the „adjust temperature“ button. At this time, the lighted indicator is the current ID code of product
5. By pressing „-“ and „+“ buttons to switch different product ID code with corresponding indicator lights up. There are 32 ID codes in total. It is on the first code by default and the light of „-“ light up
6. After selecting the product code, press knob on the bidet, then press „stop“ on the remote control. When long „beep“ sound heard, the setting is finished.



Restore factory default settings

Remove the batteries from the remote control and reinstall them, all icons light up, and wait until only 3 indicators on, then, keep pressing the „stop“ button on the remote control, 5 indicators turn on in turn, until only the first 3 indicators on, means the factory default setting are restored.

Replace the batteries

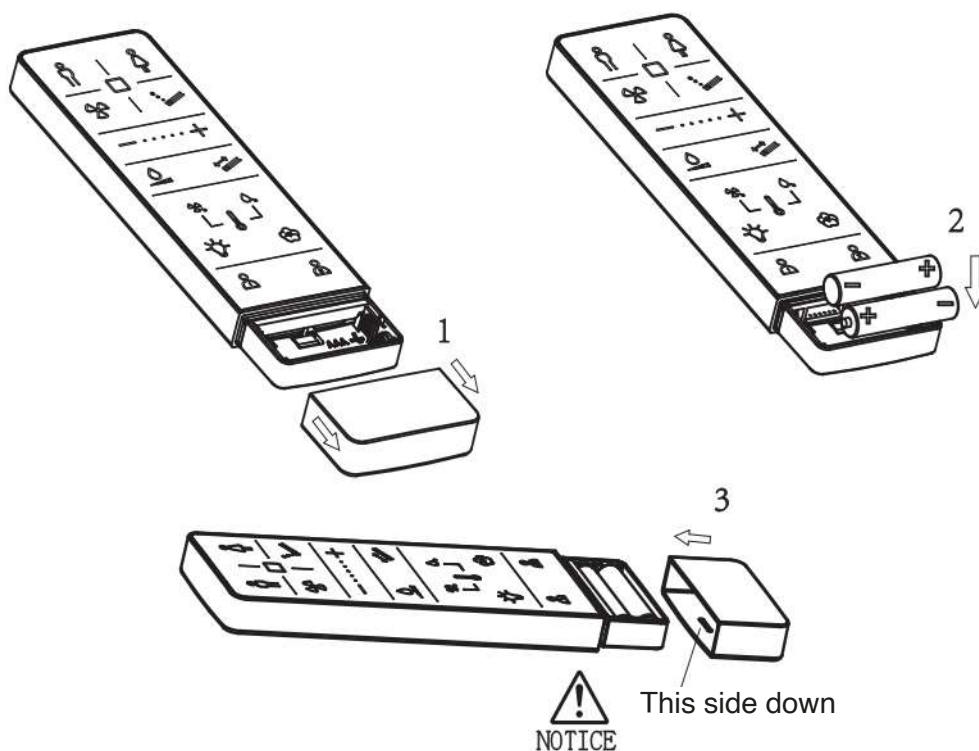
The remote control requires 2 batteries (type 1,5 V LR3/AAA).

When the user lights flash continuously, please replace the batteries in time.



NOTICE

1. Non-rechargeable batteries are not to be recharged.
2. Before charging, the rechargeable batteries must be removed from the device.
3. Do not use different types of batteries together, nor mix new and used batteries.
4. Insert the batteries according to the correct polarity.
5. Exhausted batteries must be removed from the device and disposed of safely.
6. If the device will not be used for an extended period, remove the batteries from it.
7. The power contacts must not be shorted.



Troubleshooting

Problem	Potential cause	Suggested action
The washing can not work	The power supply may not be opened	Please turn on the power
	The water supply may not be opened	Please open the inlet water valve, or check if there is a water outage
	The filter may be blocked	Please replace a new filter. It has a service life of approx half a year
	Maybe not in the seating state	Please sit on the seat and adjust sitting position
	Maybe the cover is closed	Please open the cover and sit on the seat
	Maybe it is not used for more than 72 hours	Not used for more than 72 hours, when the user operates the washing, it will open the self-cleaning for about 3 minutes. All the buttons are invalid during the self-cleaning and it will return to normal after the self-cleaning.
The nozzle goes back suddenly	The washing cycle is 3mins. The nozzle will stop spraying after 3mins, and then go back	This is normal and please re-press the „wash“ button to start washing again
	There may be some problems of water supply	Please check if there is a water outage
	Maybe the seated sensor detects the user left the seat	Please adjust sitting position
	Maybe the cover is closing	Do not put down the cover when it is washing
Low water flow rate	The water flow rate may be set at low grades	Please increase the flow rate as per „adjusting water flow rate“ of operating instructions
	The water supply pressure may be too low	Please check and ensure the water supply pressure is $\geq 0,07$ MPa
	The filter may be blocked	Please replace a new filter. It has a service life of approx. half a year
	The nozzle may be blocked	Please replace a new nozzle
Low water temperature	The water temperature may be set at low grades	Please set the water temperature at high grade as per „adjusting temperature“ of operating instructions
	Maybe the temperature of water supply is too low	Please set the water temperature at high grade as per „adjusting temperature“ of operating instructions, or decrease the flow rate as per „adjusting water flow rate“ of
The nozzle comes out slowly	When start washing function, the nozzle will be self-cleaning before coming out, and this will take some	This is normal
The water flows out but the nozzle do not come out	When start washing function, the nozzle will be self-cleaning before coming out. When the washing is over, also have this feature	This is normal
	Maybe it is not used for more than 72 hours	This is normal. Not used for more than 72 hours, when the user operates the washing, it will open the self-cleaning for about 3 minutes
The dryer can not work	The power supply may not be opened	Please turn on the power
	Maybe not in the seating state	Please sit on the seat and adjust sitting position
	Maybe the cover is closed	Please open the cover and sit on the seat
	Maybe it is not used dor more than 72 hours	Not used for more than 72 hours, when the user operates the washing, it will open the self-cleaning for about 3 minutes. All the buttons are invalid during the self-cleaning and it will return to normal after the self-cleaning
Low air temperature	The air temperature may be set at low grades	Please set the air temperature at high grade as per „adjusting temperature“ of operating instructions
	The air heater can not work normally	Please contact local distributor
Night light is always off	Maybe in the bright environment	When the night light is set at smart mode, the night light will not work when in the bright environment
	The night light function may be closed	Please open the night light function and adjust the night light mode as per „light setting“ of operating instructions
Night light is always on	Maybe in the dark environment	When the night light is set at smart mode, the night light will be always on when in the dark environment
	Something may be covered around the knob	Recover the obstructions around the knob
	The night light may be set at always on mode	Please adjust the night light mode as per „light setting“ of operating instructions
The nozzle goes back automatically when manual cleaning	The nozzle goes back after washing 5 minutes	This is normal
	Maybe press the „stop“ botton	The manual cleaning will be stopped if press the knob or press the „stop“ button on the remote control
	Maybe the seated sensor detects that the seat is closing	Please do not put down the seat during the manual cleaning
The remote control is not functioning	Maybe there are not batteries in the remote control	Please install the correct batteries in the remote control
	Maybe the battery power is too low	When the battery power is too low the LED of grade will flash. Please replace the battery
	Maybe the code of the bidet and remote control is not the same	Please set the code of the remote control to the correct one. See „One-On-One setting“
There are BEEP sounds when the bidet is working	There is a short BEEP when you are sitting down, and a long BEEP when you leave. Also there is a short BEEP when the bidet has received commands	This is normal. You can turn off the sound. See „sound setting“
The bidet can not work normally	Maybe there is something abnormal	Please shut off the power and turn on after one minute. If the bidet still cannot work, please contact local distributor
The light around the knob flash twice with constantly BEEP	The water supply temperature may be too high	Please shut off the power and water supply, stop using the product, and then contact local distributor
The light around the knob keep flashing	There may be something wrong with the product	Please check if the electric power and water supply are normal, cut off the power and restart the product. If the bidet still cannot work, please contact local distributor



NOTICE

If you are installing multiple electronic bidets in the same area and want each remote control to control only its designated bidet, follow these steps.

Do not dispose of electrical devices in mixed municipal waste – use collection points for separate collection. For information on available collection systems, contact your local authority.

When electrical devices are disposed of in landfills, hazardous substances may leak into groundwater and the food chain, which can threaten health and the environment.

When replacing old equipment with new, the seller is legally required to take back the old device for environmentally friendly disposal free of charge.



cerano

MF-Traders stavby s.r.o.
U Stadionu 1881/10
792 01 Bruntál
Česká republika
Moravskoslezský kraj, okres Bruntál

+420 227 272 800
Info@cerano.cz