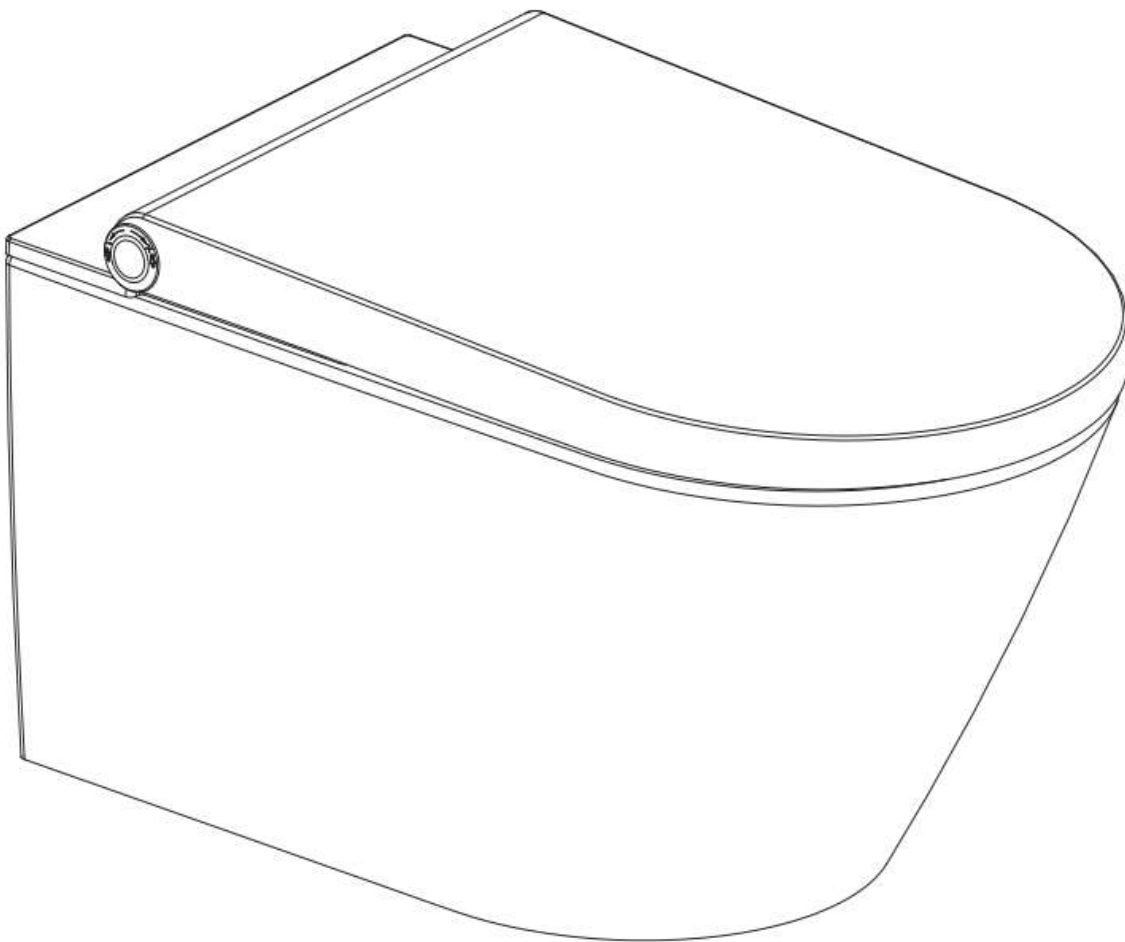


## User Manual – Wall-Hung Toilet Bowl Cronus Standard

---



---

cerano

---

# Safety Precautions

---

## Explanation of Symbols



**Danger** – Indicates a potentially hazardous situation that may cause serious injury or death.



**Notice** – Indicates a potentially hazardous situation that may cause injury or property damage.



**Forbid** – Indicates activities that are forbidden.



**MUST BE ABIDED**

**Must be abided** – Indicates activities that must comply with the rules.



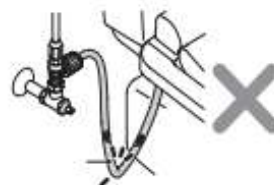
The supplier is not responsible for any damages resulting from failure to comply with the following regulations.

1. This device is a Class I electrical appliance and must be properly connected to a grounding system.
  2. If the power cable is damaged, it must be replaced by the manufacturer, their service representative, or another qualified person to prevent danger.
  3. This device is an electrical appliance. It must not be installed in places where it may be exposed to splashing water or high temperatures. Good ventilation must be ensured in the bathroom using a fan or ventilation opening.
  4. This device may be used by children under 3 years old only under constant supervision of an adult in their immediate vicinity. Children aged 3 years and above, as well as persons with reduced physical, sensory, or mental capabilities or lack of experience and knowledge, may use the device if they have been given proper instruction and supervision. Children must not play with the device. Cleaning and maintenance must not be performed by children without supervision.
  5. The device is permanently connected to the water supply piping. Please do not disassemble the water connection except during installation and maintenance.
  6. Portable residual current devices (PRCD) are optional. The PRCD must be securely mounted.
-



## FORBID

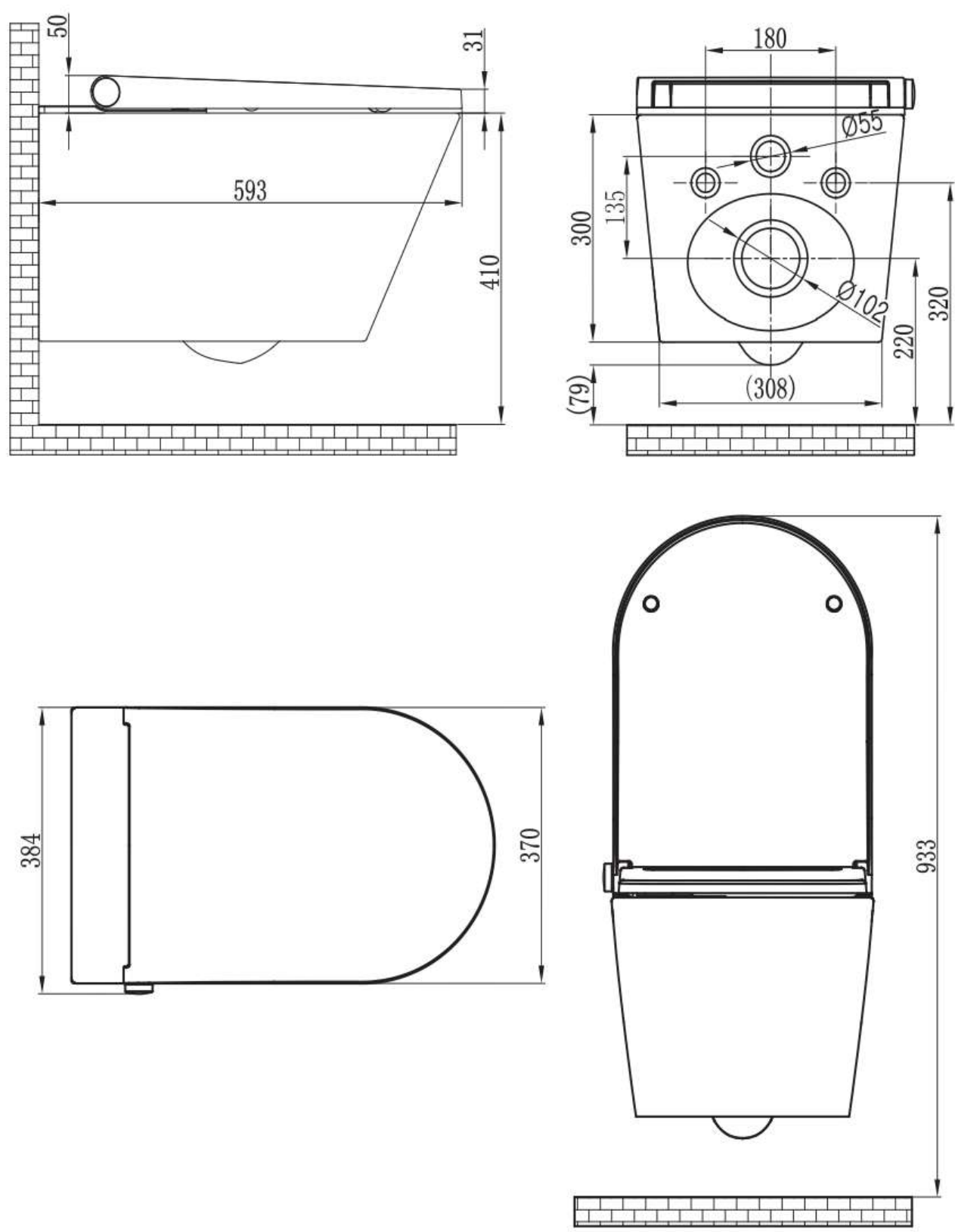
1. Do not plug in or unplug the power plug with wet hands. Otherwise, there is a risk of electric shock.
2. Do not damage the power cable or plug. Otherwise, there is a risk of electric shock, short circuit, and fire.
3. Do not use a loose socket. Otherwise, there is a risk of electric shock and fire.
4. The power supply must comply with regulations. Otherwise, there is a risk of product damage and fire.
5. Do not disassemble, repair, or reassemble the product. Otherwise, there is a risk of electric shock and fire.
6. Do not expose the device to open flames or cigarettes – fire hazard.
7. Take care to prevent water, cleaning agents, or urine from coming into contact with the product or plug. Otherwise, there is a risk of electric shock, product damage, and fire.
8. Do not turn the product upside down. It may cause damage.
9. Do not bend or deform the supply hose. It could cause water leakage.
10. Use only new hoses supplied with the device. Do not reuse old hoses.



# Technical Specifications

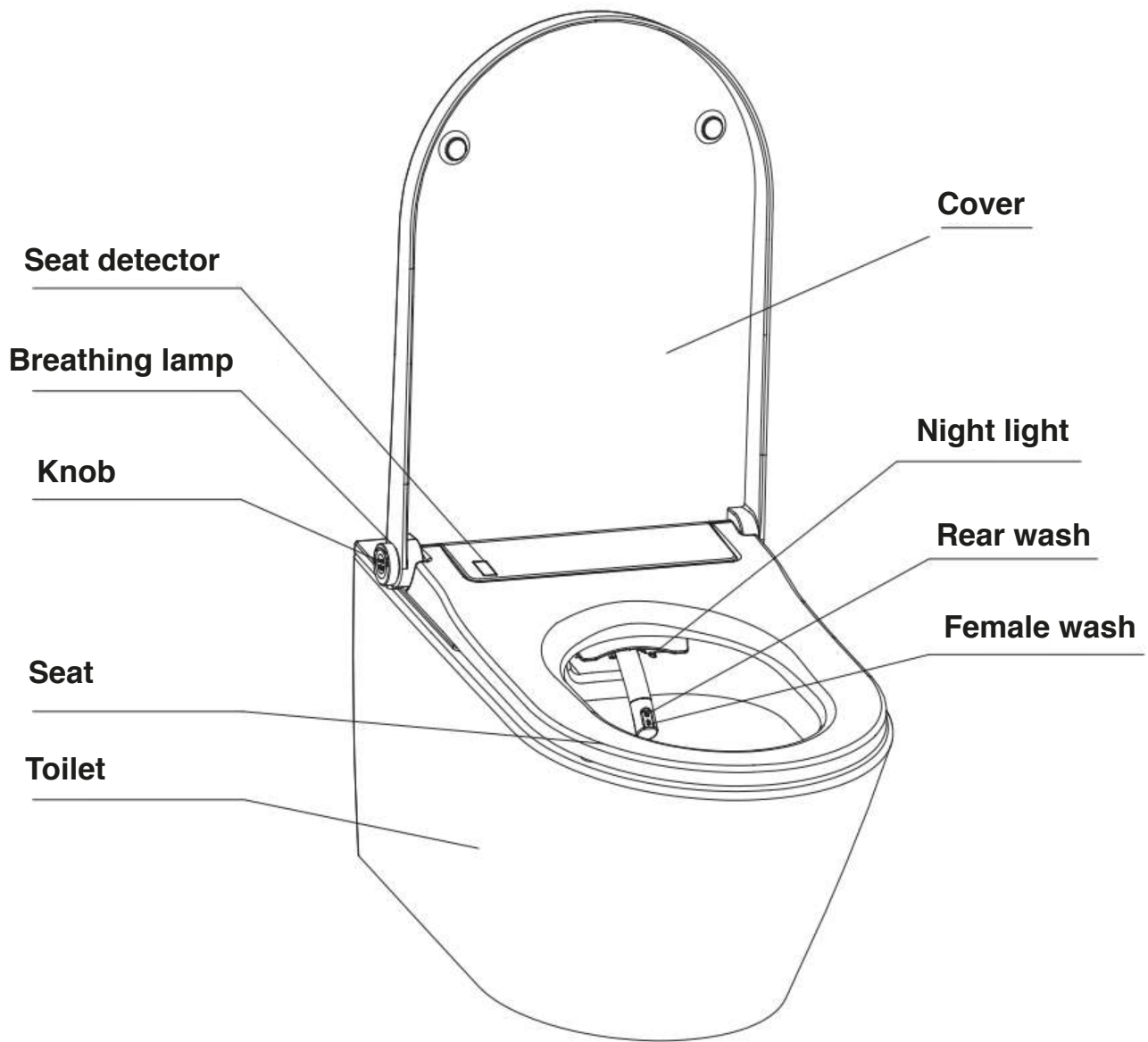
Model		Standard
Wash	Rear wash	●
	Female wash	●
	Oscillating spray	●
	Pulsating spray	●
	Oscillating and pulsating spray	●
	Adjustable water temperature	5 steps (default 3rd)
	Adjustable flow rate	5 steps (default 3rd)
	Adjustable spray position	5 steps (default 5rd)
Warm air	Air drying	-
	Adjustable dryer temperature	-
Hygiene	Nozzle self cleaning	●
	Nozzle manually cleaning	●
	Night light	●
	Breathing lamp	●
	Soft closing seat and cover	●
	Body knob	●
	Remote control	●
	Rimless toilet	●
	Installation of the toilet	Wall-hung
	Water supply connector	G 3/8
	Rated voltage	AC220-240V, 50/60HZ
	Power	1170W
	Length of power cord	1,8 m
	Water supply pressure	0,07 ~ 0,75MPa (0,7 ~ 7,5 Bar)
	Water supply temperature	4 ~ 35°C
	Ambient temperature	4 ~ 40°C
	Protection degree	IPX4
Wash device	Flow rate	350 ~ 650 ml / min
	Water temperature	31 ~ 39°C
	Wash cycle time	3 minutes
	Heating mode	Tank
	Maximum heater power	1200W
	Safety device	Thermal cutoff/Liquid level switch/Thermostat
	Backflow prevention	Air gap
Dry device	Maximum speed of air	-
	Maximum dryer power	-
	Dry cycle time	-
	Warm air temperature	-
	Safety device	-
Remote control (optional)	Frequency range	2460 MHz
	Maximum RF output power	-10 dBm
	Type of batteries	3V CR2032
	Number of batteries	2 ks
	Net weight	32 Kg
	Dimension	593*370*380 mm

Technical modifications may be incorporated into updated versions of the manual without prior notice.  
In case of differences in shape, color, or accessories, the actual product design takes precedence.



# Product Overview

---

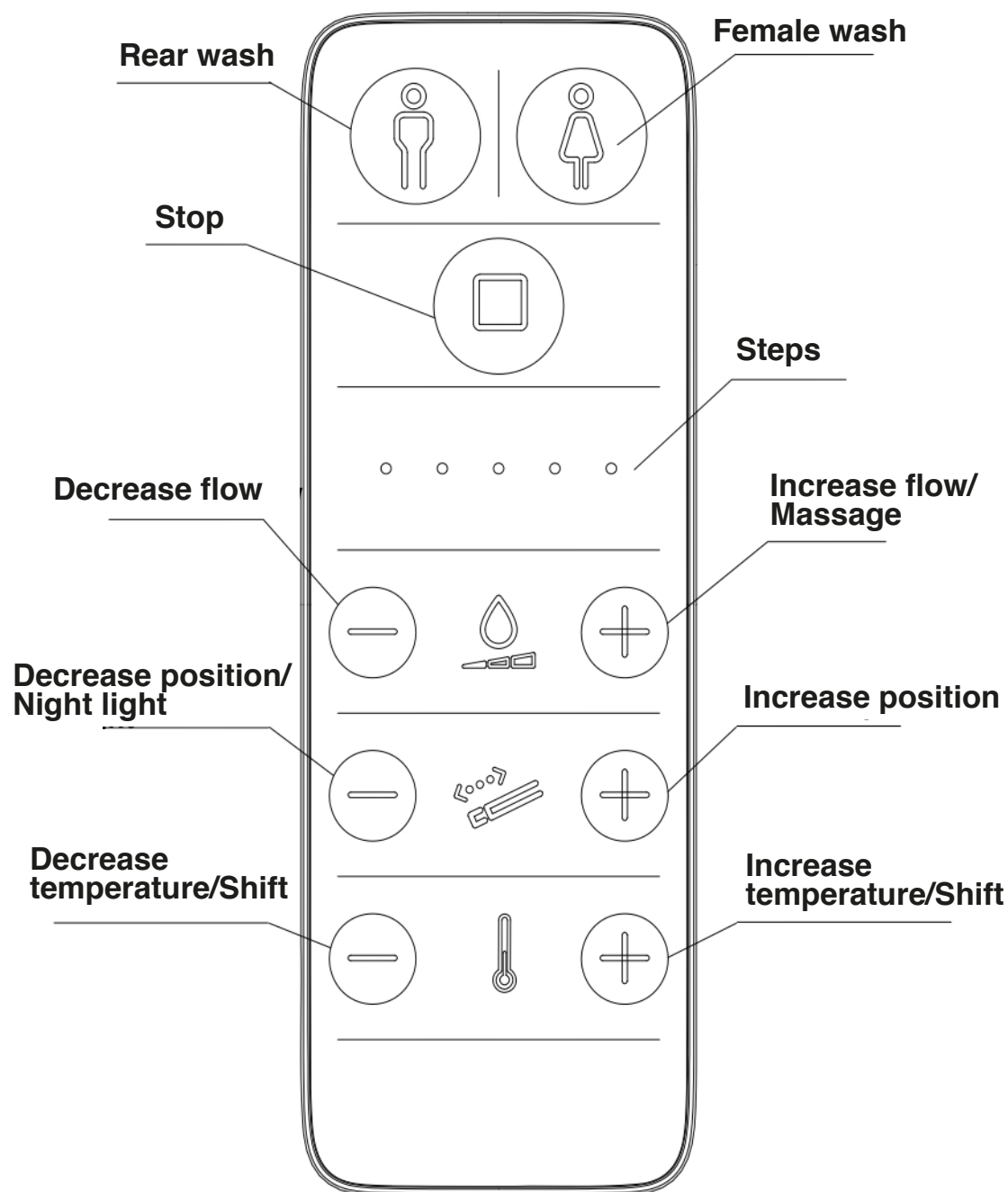


The picture of this instruction is for reference only. Please subject to the actual product.

---

## Remote Control (optional)

---



### NOTICE

1. Before using, the remote control requires 2 batteries (type 3V CR2032).
2. Versions of software: V1.0

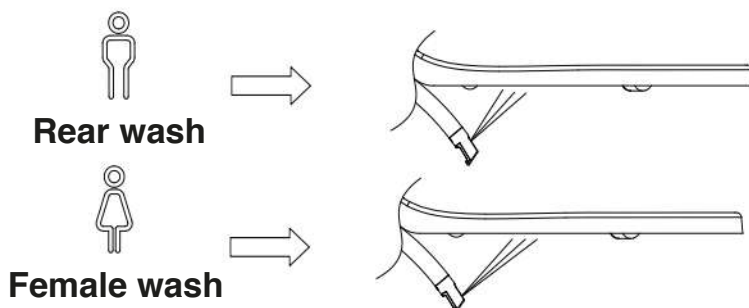
(The software updates will not be notified. Please follow the real remote control.)

---

## Rear wash / Female wash

---

Press the "Wash" button on the remote control – the washing process will start.  
The process will automatically stop after 3 minutes. You can stop the washing at any time by pressing the "Stop" button.



Alternatively, you can control the device by turning the control knob.  
Turn the knob clockwise to activate the "female wash" function and counterclockwise for the "rear wash" function. The washing will automatically stop after 3 minutes, followed by the drying process. You can stop the washing at any time by pressing the "Stop" button.

**Note:**

During rear or female washing, rinsing will first occur in a static position for approximately 10 seconds, followed by a moving wash for about 18 seconds, after which the nozzle will return to the static position and remain there until the end of the cycle.



All the controls described apply only to models with all functions.  
If the model you purchased does not include some of the functions, please ignore the corresponding instructions.

---



---

## Massage mode

During rear or feminine washing.

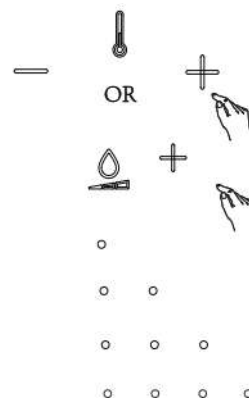
Press and hold the “+” or “-” button to adjust the temperature on the remote control, then press the “+” button to adjust the water flow.  
By repeatedly pressing this button, the washing will switch between different massage modes.

Normal mode: when one indicator light is on

Oscillating mode: when two indicator lights are on

Pulsating mode: when three indicator lights are on

Oscillating + Pulsating mode: when four indicator lights are on

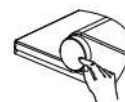
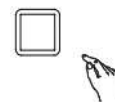


## Stop operation

During rear or feminine washing.

Press the “Stop” button on the remote control to stop the washing.

Alternatively, you can press the control knob to end the washing.



## Water flow adjustment

During rear or feminine washing

Press the “+” or “-” button on the remote control to adjust the water flow.  
The flow indicator light will turn on.

Alternatively, you can control it by turning the knob.

The flow increases when turning clockwise and decreases when turning counterclockwise.



## Nozzle position adjustment

Default is level 5.

During rear or feminine washing.

Press the “+” or “-” button on the remote control to adjust the position,  
and move the nozzle forward or backward.



---

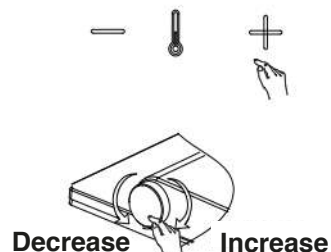
## Temperature adjustment

During rear or feminine washing.

Press the “+” or “-” button for temperature on the remote control to adjust the water temperature.

Alternatively, press and turn the knob simultaneously.

The water temperature increases when turning clockwise and decreases when turning counterclockwise.

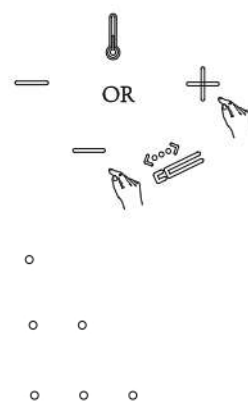


## Night light setting

The “Always On” mode for the night light is set as the default.

Press and hold the “+” or “-” button for temperature on the remote control, then press the “-” button to adjust the position.

By pressing repeatedly, the night light switches between the modes “Off,” “Always On,” and “Smart Mode.”

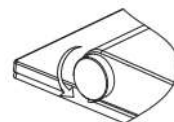


Off mode: when one indicator light is on

Always On mode: when two indicator lights are on

Smart Mode: when three indicator lights are on

If you are not seated on the toilet seat, turn the control knob counterclockwise. This will switch the night light between the three modes: “Off,” “Always On,” and “Smart Mode.”



**Note:** The “Smart” mode means the night light will automatically turn on when the main light is off or when it is dark, and will turn off when there is enough light in the room.

---

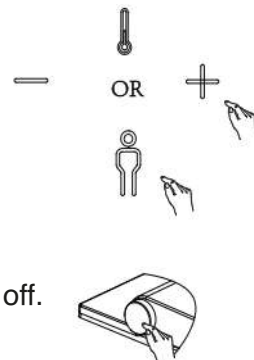
---

## Decorative lighting setting

By default, the decorative lighting is always on.

Press and hold the “+” or “-” button for temperature on the remote control, then press the “rear wash” button. The decorative light will turn off. If you press the “rear wash” button again, the light will turn back on.

Alternatively, open the lid and sit on the seat without starting washing or drying. Then press and hold the control button for 6 seconds – the decorative light will turn off. Press and hold the knob again for 6 seconds to turn the light back on.



## Power standby mode setting

When the seat is unoccupied:

Press and hold the control knob for more than 6 seconds – the device will enter power standby mode. Press and hold the knob again for more than 6 seconds to restart the device.



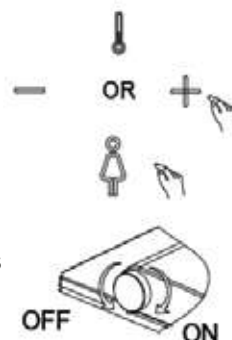
## Sound setting

Sound is on by default.

When the bidet receives a command or signal, it emits a beep.

Press and hold the “+” or “-” button for temperature on the remote control, then press the “feminine wash” button. Pressing this button again will toggle the sound on or off.

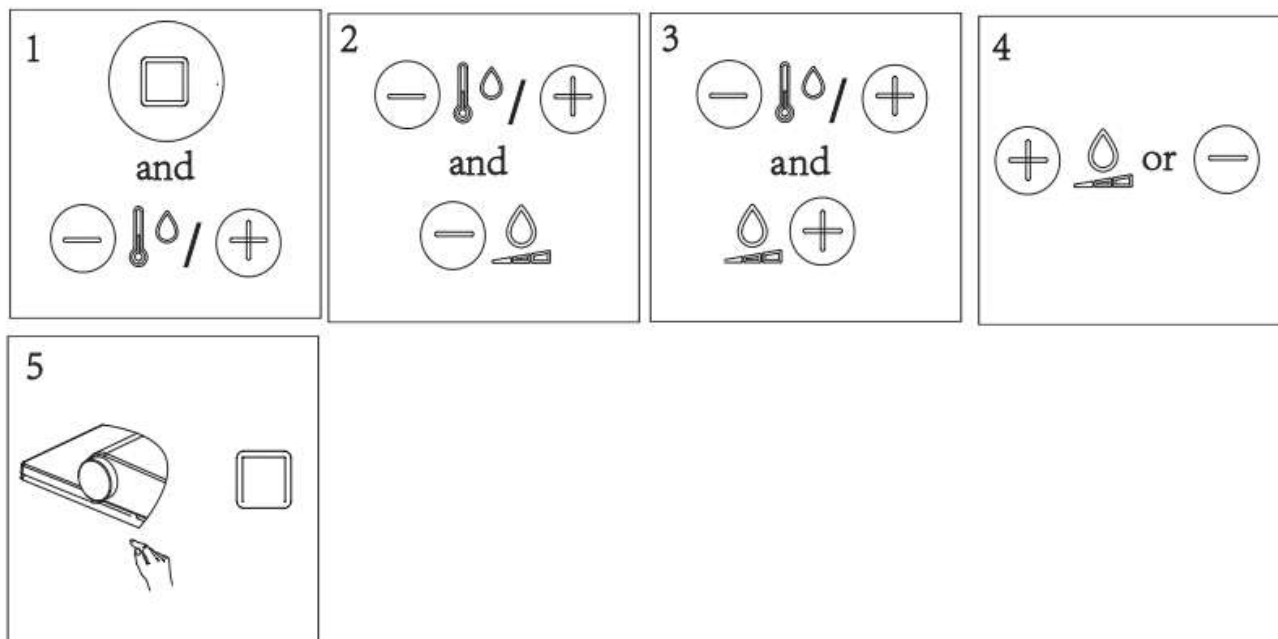
Alternatively, do not sit down. Press and hold the control knob and turn it simultaneously clockwise to turn the sound on, turn counterclockwise to turn the sound off.



---

**If you are installing multiple electronic bidets in one area and want each remote control to operate only its designated bidet, follow these steps:**

1. Open the lid and seat, and do not sit down. Set the night light to the “Off” mode (see the “Light Setting” section).
2. On the remote control, press and hold the “Stop” button and the temperature “Shift” button simultaneously until all five indicator lights turn on and the first indicator starts blinking.
3. Release the “Stop” button but keep holding the “Shift” button.
4. Press the “–” and “+” flow buttons one after the other, then release the “Shift” button. At this moment, the lit indicator shows the current product ID code.
5. By pressing the “–” and “+” flow buttons, you can change the product ID code—the corresponding indicator light will turn on for the selected ID. There are 10 ID codes available in total. The default setting is the first code, where the first indicator light is on.
6. After selecting the ID code, press the control knob on the bidet, then press the “Stop” button on the remote control. When you hear a long beep, the setting is complete.



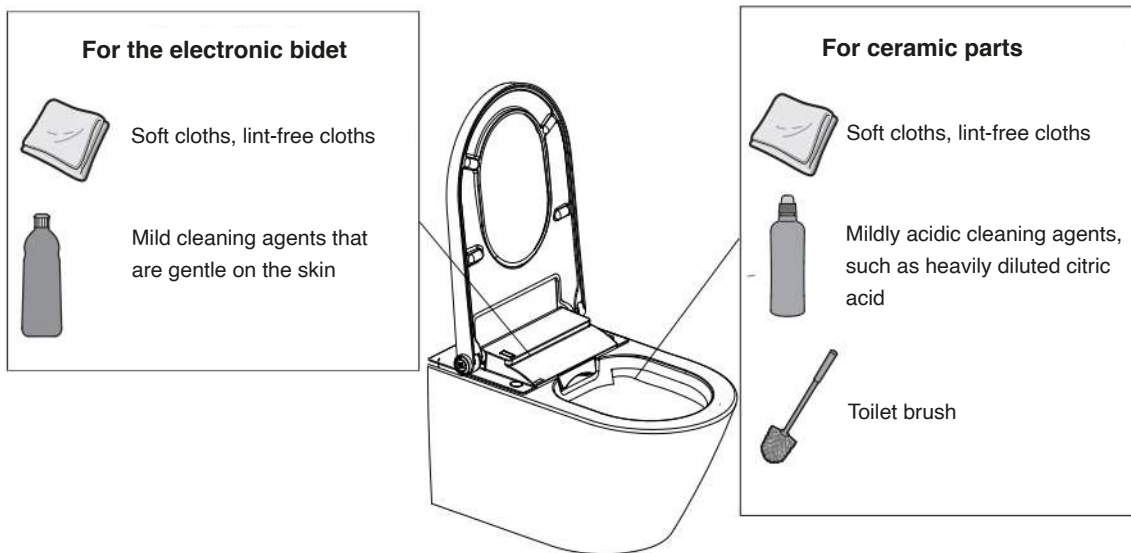
# Maintenance and cleaning

---

## General recommendations for maintenance and cleaning

Maintenance interval	Maintenance tasks
Daily	Wipe water drops with a soft, lint-free cloth to prevent the formation of limescale stains.
Weekly	Clean all surfaces and corners. If necessary, clean the washing nozzle – see the section "Nozzle Cleaning."
Monthly	Clean the ceramic toilet using a mildly acidic cleaning agent.
Every six months	Replace the filter if necessary.

## Cleaning agents and tools



### FORBID

Do not use cleaning agents containing strong acids or alkalis to clean the electronic bidet.  
Do not use hard brushes, such as toilet brushes or nylon brushes, to clean the ceramic parts of the toilet.  
Also, do not use metal brushes.

## Self-cleaning of the tank



### NOTICE

If the device has not been used for more than 72 hours, the tank self-cleaning will automatically activate for approximately 3 minutes when washing is started again.  
During self-cleaning, all buttons are non-functional.  
After self-cleaning is complete, the device returns to normal operation.

---

---

## Nozzle cleaning

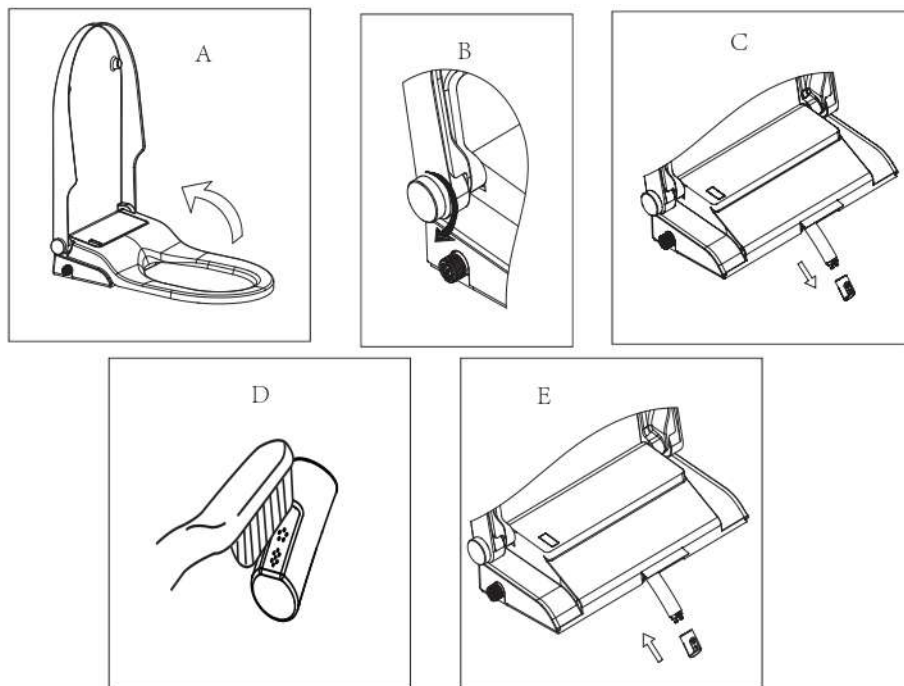
The nozzle cleans automatically before and after washing.

Manual cleaning procedure:

Open the lid and seat, then turn the control knob clockwise.

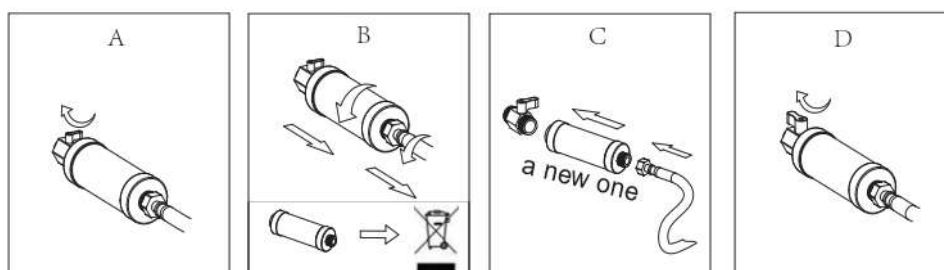
The nozzle will extend and start rinsing with cleaning water.

After 5 minutes, it will automatically retract, or you can retract it earlier by pressing the “Stop” button.



## Filter replacement

The filter has a lifespan of approximately six months, depending on the water quality in the environment. The filter should be replaced if the water flow during washing is too weak.

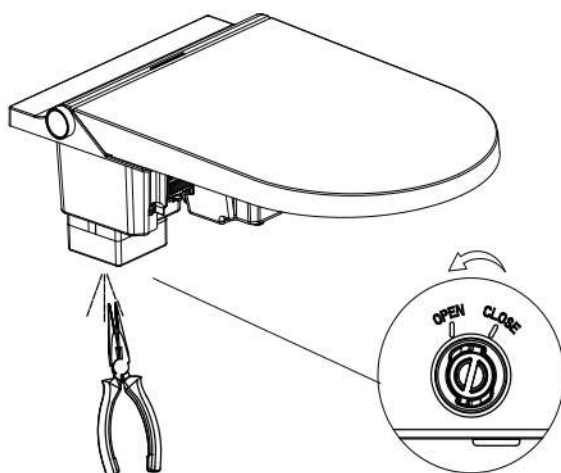
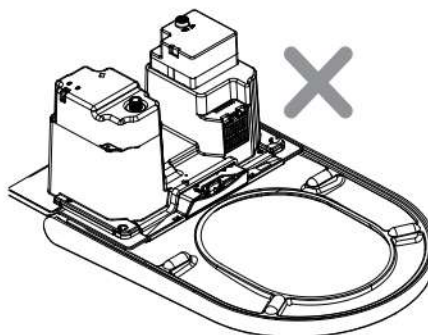


---

## Draining the water tank



1. Before disassembling the electronic bidet, the water supply must be turned off and the power disconnected.
2. Do not tilt or rotate the device until the water tank is completely drained.



1. Grip the drain plug with pliers, turn it to the “open” position, and pull it out. The water will begin to drain.

2. After draining is complete, insert the plug back in and turn it to the “close” position.

# Battery replacement

---

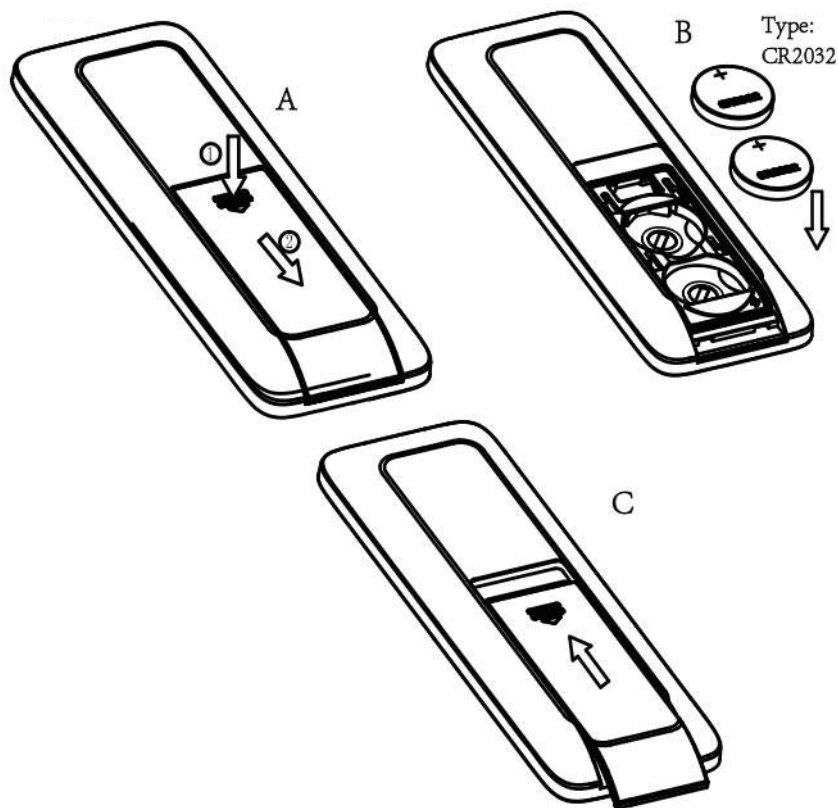
The remote control requires 2 batteries of type 3V CR2032.

When the battery level indicator blinks continuously, replace the batteries as soon as possible.



## NOTICE

1. Rechargeable batteries must not be charged unless they are designed for that purpose.
2. Before charging, rechargeable batteries must be removed from the device.
3. Do not use different types of batteries together, nor mix new and used batteries.
4. Insert batteries according to the correct polarity.
5. Used batteries must be removed from the device and disposed of safely.
6. If the device will be unused for an extended period, remove the batteries.
7. Power contacts must not be short-circuited.





# Troubleshooting

Problem	Possible causes	Recommended solution
Washing does not work	The power may not be turned on	Turn on the power
	The water supply may not be open	Open the water supply valve or check if the water supply has been interrupted
	The filter may be clogged	Replace the filter with a new one (the filter's lifespan is approximately six months)
	The user may not be seated on the toilet seat	Sit on the seat and adjust your position
	The lid may be closed	Open the lid and sit on the seat
	The device may not have been used for more than 72 hours	If the device has not been used for more than 72 hours, self-cleaning will automatically activate for approximately 3 minutes when washing starts. During this time, all buttons are disabled. After self-cleaning is complete, the device returns to normal operation
The nozzle suddenly retracts	The washing cycle lasts 3 minutes – after this time, the nozzle stops spraying and retracts	This is normal – to restart washing, please press the “wash” button again
	There may be a problem with the water supply	Check if the water supply has been interrupted
	The seat sensor may have detected that the user has stood up	Adjust your position on the seat
	The lid may be closing	Do not close the lid during washing
Low water flow	The water flow may be set to a low level	Increase the water flow according to the “Water Flow Adjustment” section in the user manual
	The water supply pressure may be too low	Check that the water supply pressure is at least 0.07 MPa
	The filter may be clogged	Replace the filter with a new one – its lifespan is approximately six months
	The nozzle may be clogged or blocked	Clean the nozzle
Low water temperature	The water temperature may be set to a low level	Set the water temperature to a higher level according to the “Temperature Adjustment” section in the user manual
	The temperature of the incoming water may be too low	Set the water temperature to a higher level according to the “Temperature Adjustment” section in the user manual, or reduce the water flow according to the “Water Flow Adjustment” section
The nozzle extends slowly	When the washing function is activated, the nozzle first automatically cleans itself before extending – this process may take a moment	This is normal
Water flows, but the nozzle does not extend	When the washing function is activated, the nozzle first automatically cleans itself before extending. After washing is complete, the nozzle will automatically clean itself again	This is normal
	The device may not have been used for more than 72 hours	This is normal. If the device has not been used for more than 72 hours, self-cleaning will automatically activate for approximately 3 minutes when washing starts
Drying does not work	The power may not be turned on	Turn on the power
	The user may not be seated on the toilet	Sit on the seat and adjust your position
	The lid may be closed	Open the lid and sit on the seat
	The device may not have been used for more than 72 hours	If the device has not been used for more than 72 hours, self-cleaning will automatically activate for approximately 3 minutes when washing starts. During this time, all buttons are disabled. After self-cleaning is complete, the device returns to normal operation
Low air temperature	The air temperature may be set to a low level	Set the air temperature to a higher level according to the “Temperature Adjustment” section in the user manual.
	The air heater may not be functioning properly	Please contact your local distributor
The night light remains off	The device may be located in an environment that is too bright	When the night light is set to Smart Mode, it will not turn on in a well-lit environment
	The night light function may be turned off	Open the night light function and adjust its mode according to the “Lighting Settings” section in the user manual
The night light remains on	The device may be located in a dark environment	When the night light is set to Smart Mode, it will stay on in a dark environment
	The area around the control knob may be covered by something	Remove any obstructions from the area around the control knob
	The night light may be set to the “Always On” mode	Adjust the night light mode according to the “Lighting Settings” section in the user manual
During manual cleaning, the nozzle automatically retracts	The nozzle retracts automatically after 5 minutes of washing	This is normal
	The “Stop” button may have been pressed	Manual cleaning will stop when the control knob or the “Stop” button on the remote control is pressed
	The seat sensor may have detected that the seat is closing	Do not close the seat during manual cleaning
The remote control is unresponsive	There may be no batteries inserted in the remote control	Insert the correct batteries into the remote control
	The battery may be nearly depleted	When the battery is nearly depleted, the battery level LED indicator will start flashing – please replace the battery
	The bidet and remote control codes may not match	Set the correct remote control code – refer to the “Unique Pairing” section in the manual
Beeping sounds occur during bidet operation	A short beep sounds when sitting down, and a long beep when leaving the seat. A short beep also sounds when the bidet receives a command.	This is normal. You can turn off the sound – refer to the “Sound Settings” section in the manual
The bidet is not functioning properly	There may have been a malfunction or an unusual situation	Turn off the power and turn it back on after one minute. If the bidet still does not work, please contact your local distributor.
The light around the control knob flashes twice, followed by continuous beeping	The temperature of the incoming water may be too high	Please turn off the power and close the water supply. Immediately stop using the product and contact your local distributor
The light around the control knob is flashing continuously	There may be something wrong with the device	Check if the power supply and water supply are functioning properly. Turn off the power and restart the product. If the bidet still does not work, please contact your local distributor



## NOTICE

**If you are installing multiple electronic bidets in one area and want each remote control to operate only its designated bidet, follow these steps.**

Do not dispose of electrical devices in mixed municipal waste – use collection points for separate waste collection. For information about available collection systems, contact your local authority.

When electrical devices are disposed of in landfills, harmful substances may leak into groundwater and the food chain, which can pose a threat to health and the environment.

When replacing old equipment with new, the seller is legally required to accept the old device for eco-friendly disposal free of charge.



---

# cerano

MF-Traders stavby s.r.o.  
U Stadionu 1881/10  
792 01 Bruntál  
Česká republika  
Moravskoslezský kraj, okres Bruntál

+420 227 272 800  
Info@cerano.cz